



**CYCOM TECHNOLOGIES**  
Safety simplified

# COMPANY PROFILE

*Regional Player in Safety and  
Security Systems integrations*



## **CYCOM TECHNOLOGIES**

CYCOM Technologies Limited is a professional safety service provider focusing on delivering reliable security and safety systems for homes, small business, Medium-sized companies and enterprise-level corporation.

To Us, safety goes beyond protection against theft and warding off intruders. We implement a combination of security measures ranging from intrusion alarms systems, access control systems, surveillance and monitoring systems, commercial electrical wiring as well as fire prevention systems.

**COLLIN MUGOYA**  
*Managing Director*



# Vision

---

To put in place safety measures that safeguard loved ones, assets as well as uphold an environment for business operations

# Mission

---

A Safe and secure environment where everyone and every business can thrive regardless of being plunged in hard times.



**What  
Drives  
us?**



# OUR CORE VALUES



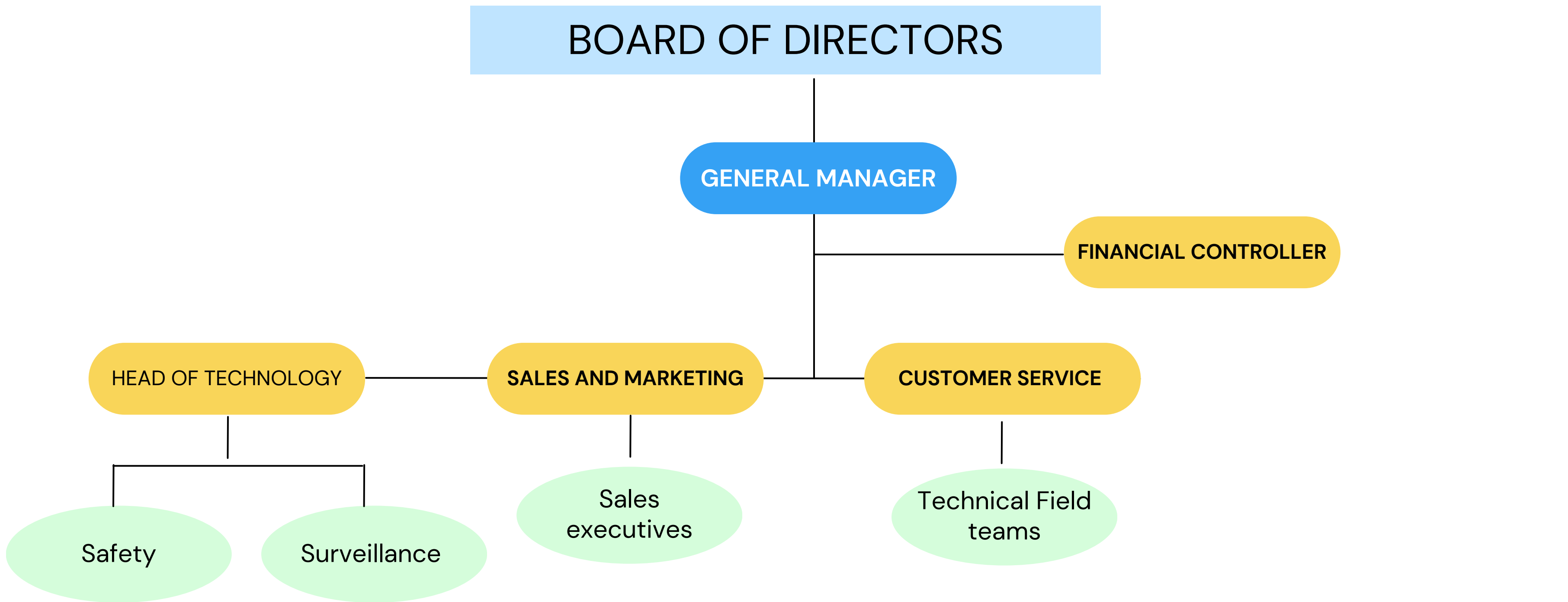
- 01 INTEGRITY:** Demonstrate honesty, transparency and ethical behaviors to our clients
- 02 EXCELLENCE:** Pursue the highest quality standards in all services while safeguarding the confidentiality of clients and partners
- 03 INNOVATION:** Define security requirements and leverage the latest technologies implementing security solutions.







# ORGANIZATION CHART

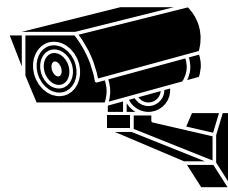




**CYCOM  
TECHNOLOGIES**

# OUR SOLUTIONS





# SURVEILLANCE CAMERAS (CCTV)

*Keep a cool head, Stay alert and Keep your guard up.*

We provide;

- CCTV Cameras
- CCTV Installation
- CCTV Maintenance
- Technical Consultation



CYCOM TECHNOLOGIES

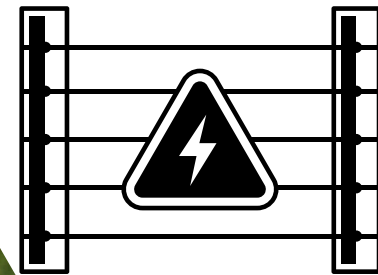


# FIRE DETECTION SYSTEMS

*Protect your people and minimize the risks to your business with reliable fire detection and alarm systems.*

- Fire fighting equipment
- Sensors and initiating devices
- Notification and audio devices
- Control panel
- Smoke detection technology





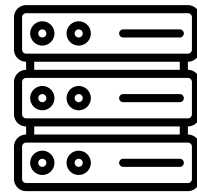
# PERIMETER WALL PROTECTION

*We install barbed wire and electric fences for both residential and commercial property.*

- Standalone fence or attached to existing perimeter.
- Galvanized high tense wires
- Sirens
- Strobe light
- Backup battery
- Key pad for arming and disarming system.





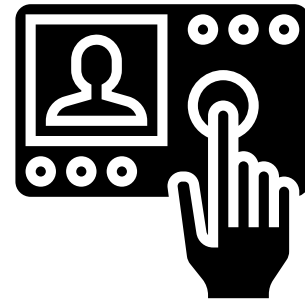


# SYSTEM NETWORKS

*Network services are utility applications that help extend the capabilities, management and security of enterprise networks*

- Network cable installation
- Power system installation
- Virtual network services





# INTERCOM SYSTEMS

*Intercoms systems are a perfect solution for accessing, controlling and monitoring the security of your business or home.*

- Video Intercom system units
- Hard Wired Intercom units
- Wireless intercom units
- carrier current intercom units



# **BOOM BARRIERS**

*A boom barrier arm is a gate or access point that regulates traffic flow by means of a long arm that pivots on the opener.*

Features of the boom barrier gate include an inbuilt anti-crush safety device, which suspends the motion of the boom, should it meet any obstruction. Optional beam sensor provides further protection to vehicles. Auto-close of the boom barrier can be programmed through the controller.





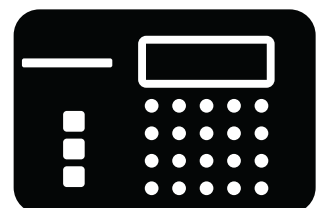


# BIOMETRIC SYSTEM

*Preventing unauthorized individuals from gaining physical access restricted rooms or facilities. This is accomplished with the help of locks and biometric authentication.*

- Access PINS
- Fingerprint
- Facial Recognition
- Palm print
- Voice recognition





# INTRUDER ALARM PANEL

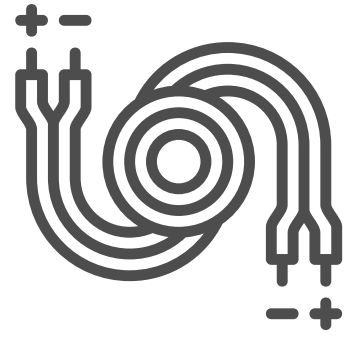
## **Motion detector systems**

Perhaps the most common intruder alarm solution used in both commercial and domestic properties, motion detector systems pick up on people moving around inside a room when there shouldn't be anyone there.

## **Door Contacts**

Typical usage: Perimeter doors for entry/exit setting and internally for control of areas within your premises (this depends upon the risk assessment).





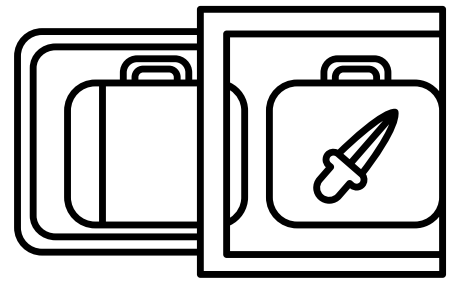
# COMMERCIAL WIRING

*Any time you are dealing with electricity, you need a certified expert. We have experience with commercial and industrial environments.*

- New construction
- Remodeling
- Landscape



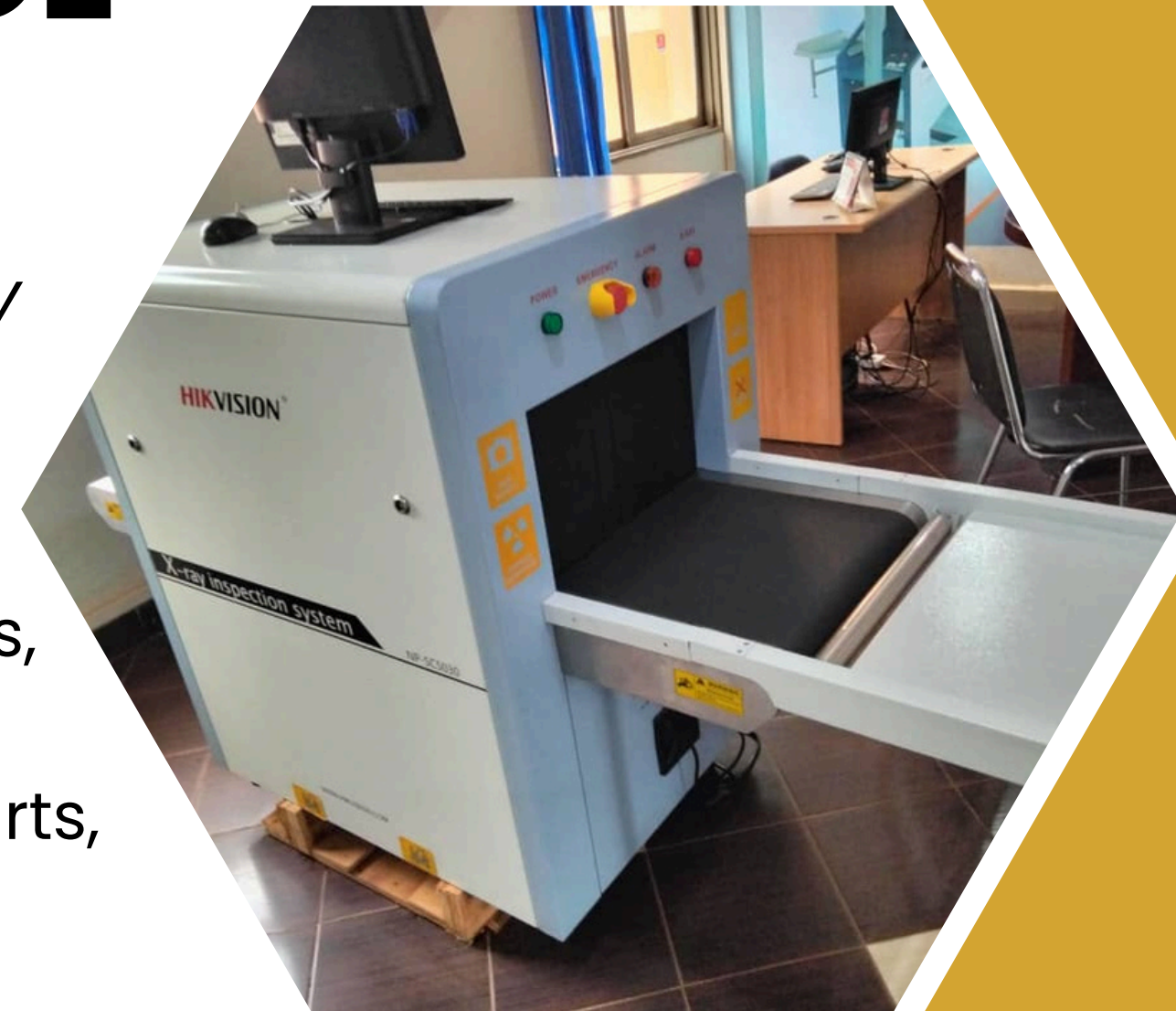




# X-RAY BUGGAGE SCANNER

*X Ray Scanner can quickly and effectively detect all kinds of dangerous goods.*

They are widely used in bus station, customs, express logistics, government agencies, embassies, airports, convention centers, courts, Tourist attractions, sports tubes, post offices, express delivery companies, and factories.



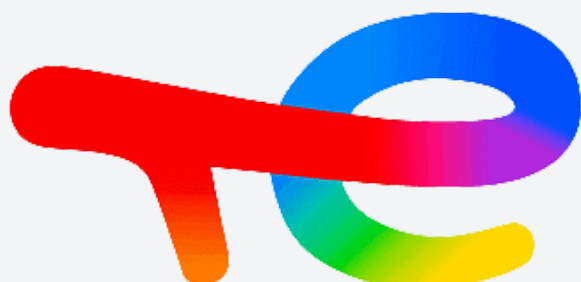
# REFERENCE CLIENTS



UGANDA  
COMMUNICATIONS  
COMMISSION



Koki Hotel



TotalEnergies





# CONTACT US



0200-994-111



+256-776-674-115



Nkinzi Road wandegeya  
Opp Eastern gate Makerere  
Maimood Hostels Ground Floor